



Earth Observation based Crisis Information – Emergency mapping services and recent operational developments

Konstanze Lechner, Monika Gähler

German Aerospace Center (DLR)



Center for Satellite Based Crisis Information
– Emergency Mapping & Disaster Monitoring –
a service of DFD



Knowledge for Tomorrow



Landsat



WorldView



TerraSAR-X



Code



Drone



Crisis or Disaster



National authorities

(Department for foreign affairs,
Federal Office of Civil Protection
and Disaster assistance,
Federal ministry of the Interior)

Federal Agency for
Technical Relief



German Red Cross +

Information

① Mobilization



- triggering process
- situation briefing

- satellite tasking
- archive search
- auxiliary data

② Data acquisition



- geometric correction
- image enhancement

③ Pre-Processing



④ Analysis



- data fusion
- information generation

⑤ Map Production



- quality control
- maps (printed; online)
- GIS-ready geodata
- information dossiers

Integration of
auxiliary data

Integration in
collaborative platform

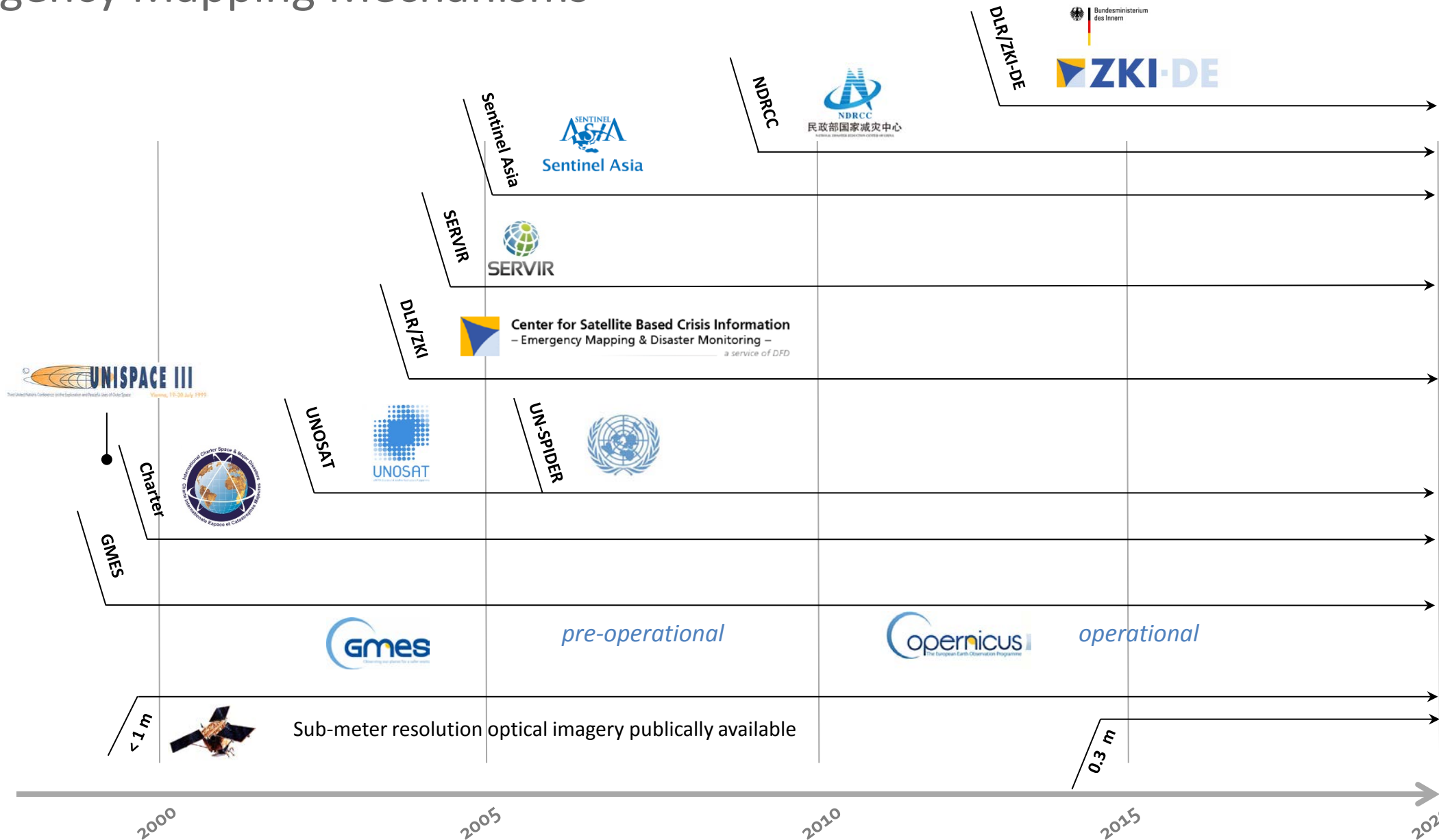
Planning and
Decision Support

⑥ Dissemination



- Cooperation with
national/local
authorities
- Relief organisations,
NGOs
- Public,...

Emergency Mapping Mechanisms



Center for Satellite based Crisis Information (ZKI)



GERMANY

Provision of
ZKI-Services for national
authorities



GLOBAL

DLR membership in the
International Charter „Space
and Major Disasters“



EUROPE

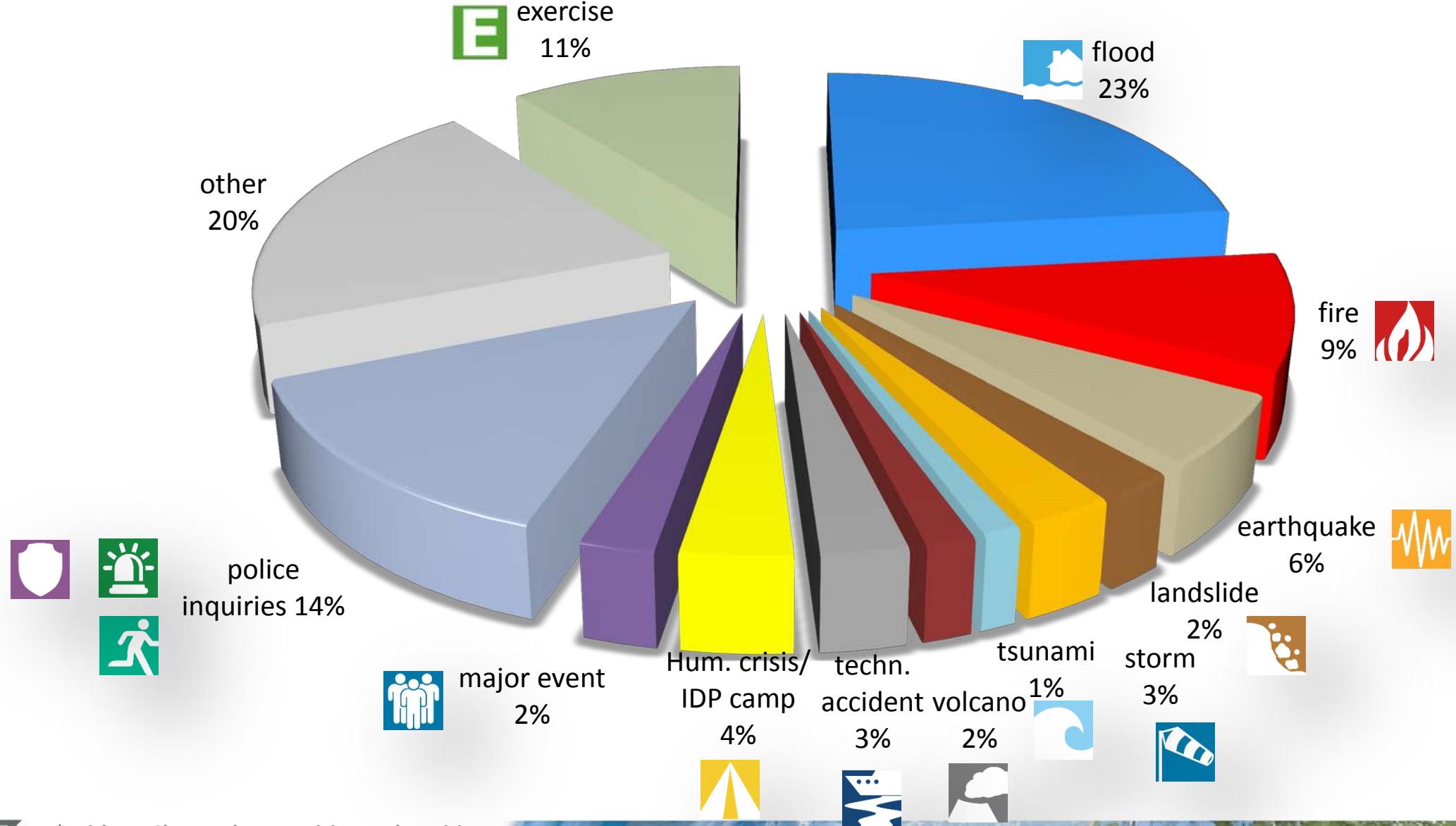
Participation in the European Copernicus
Emergency Management Service

Remote Sensing Service



- ✓ Analysis of Earth Observation data
 - ✓ in case of natural disasters
 - ✓ for humanitarian relief operations
 - ✓ for civil security
- ✓ 12 hours / 7 days on-call duty
- ✓ Trainings and Specialist Advice
- ✓ Research and Development

Thematic type of ZKI activations* since 1999





To develop a **pan-European Test-bed** for Crisis Management for trialling solutions



TRIALS
Poland, France, Austria,
The Netherlands



FINAL DEMO
Poland/Italy



To develop a comprehensive
**Portfolio of Crisis
Management Solutions**

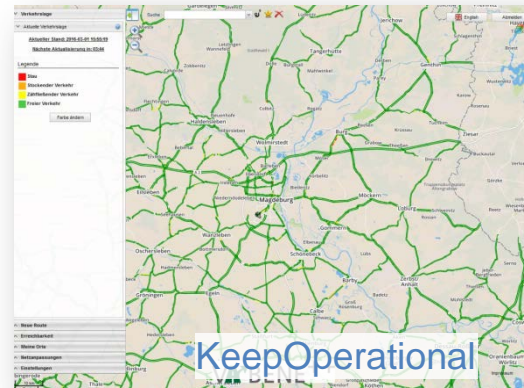
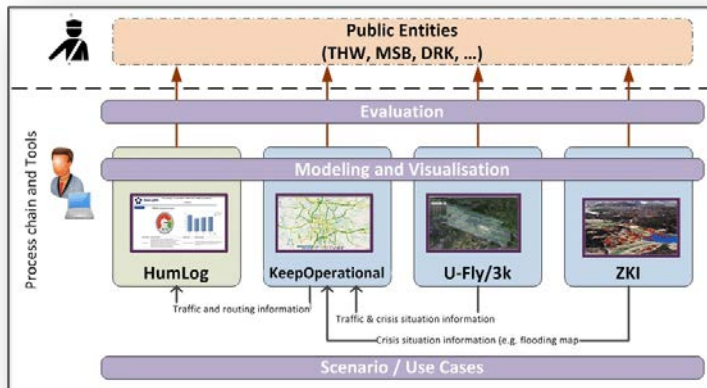


To facilitate a **shared understanding** in Crisis
Management across Europe



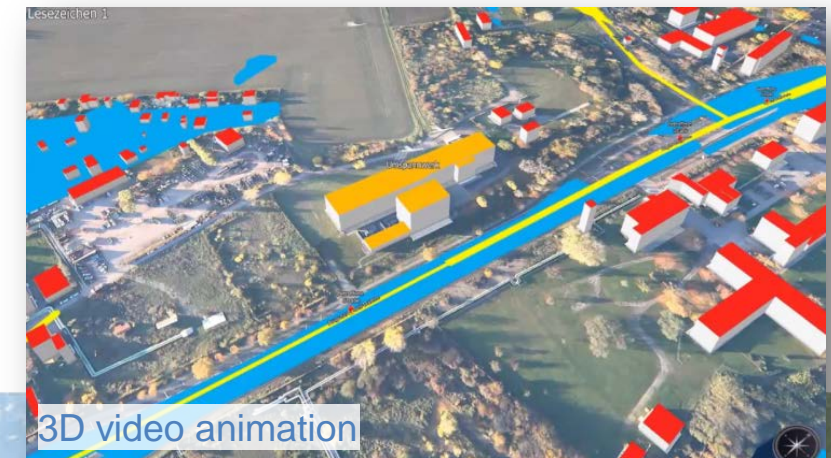
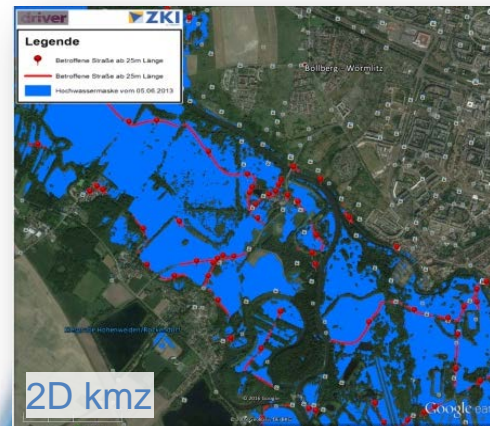
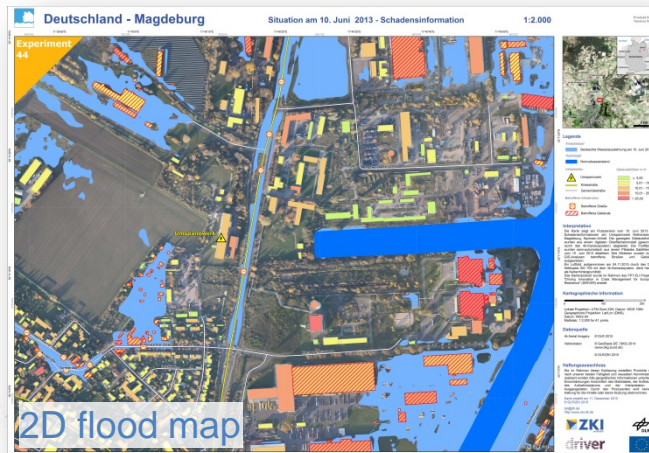
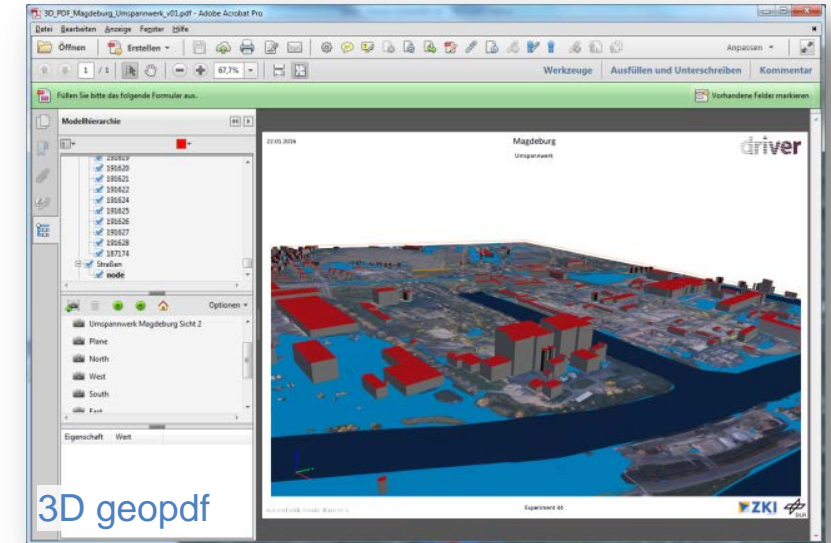
tabletop experiment “transport and logistic support”, 2016

- Simulation of 2013 flood scenario in Magdeburg, Germany
- Supporting Federal Agency for Technical Relief (THW) in disaster response phase
- THW main requirements were:
 - Overview of the traffic situation in the affected region
 - ✓ Aerial images recorded by DLR (U-Fly) and fed into DLR’s traffic management system (KeepOperational)
 - Support THW’s transport and logistic
 - ✓ Generate organization- and scenario-specific models (HumLog)



DLR/ZKI supporting Relief Units with 3D mapping products

- THW main requirements were:
 - General situation awareness
 - Virtual impression of affected region
 - Detection of flooded areas and inundated roads
 - Monitor the transformer station (critical infrastructure)
 - Measure altitude of affected buildings
 - Measure distances / size of areas
 - Flood depths
- ✓ Aerial and satellite imagery analyzed to provide crisis relevant information (ZKI)

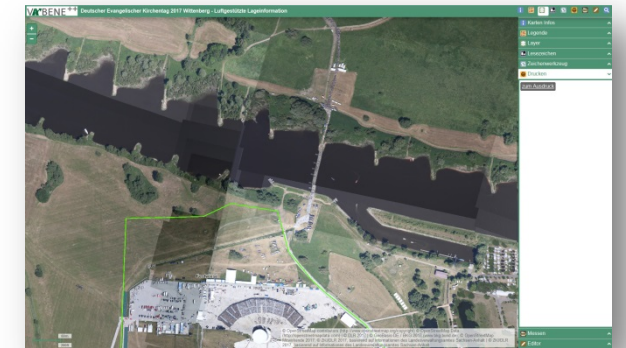


Near-Real Time Situational Awareness during Major Events

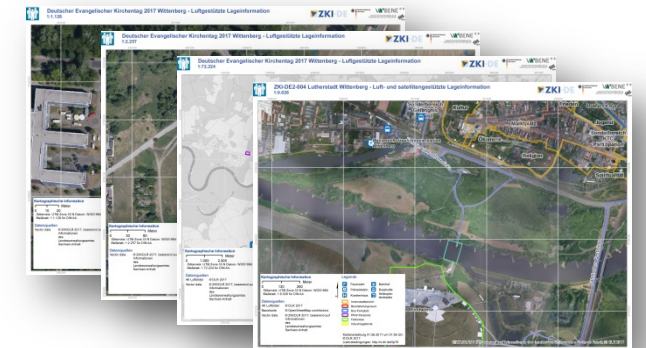
- Major event: 36th German Protestant Church Conference in Wittenberg 2017
- Users: Federal Agency for Technical Relief (THW), LVwA Saxony-Anhalt, Wittenberg District, Johanniter Unfall-Hilfe e. V., Saxony-Anhalt Police Department
- Main requirements:
 - Planning and monitoring the major event
 - ✓ Aerial images recorded by DLR and visualized in near-real time in DLR's webclient
 - ✓ Satellite images acquired and analyzed for general situation awareness
 - ✓ Automatically generated map products
 - Overview of the traffic situation, focusing on the arrival and departure traffic
 - ✓ Aerial images recorded by DLR and fed into DLR's traffic management system



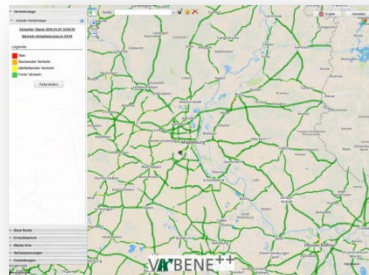
4k camera system on a helicopter



DLR's webclient



Automatically generated maps



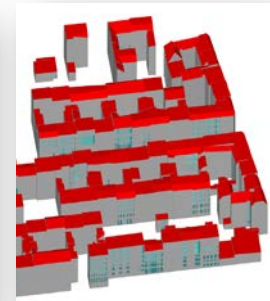
KeepOperational

3D Mapping of German Protestant Church Conference



Conclusion and outlook

- ✓ Earth Observation-based disaster information has improved and operationalized enormously
- ✓ Rapid Mapping Procedures have been standardized
- ✓ Many Emergency Mapping Mechanisms at different (inter)national levels have been established
- ✓ Permanent development of new methodologies and their operationalization at DLR/ZKI in different contexts of emergency mapping, e.g.
 - ✓ 3D mappings and generation of 3D mapping products
 - ✓ Near-real-time provision of aerial imagery (DLR's 4k camera system)
- ✓ In the future improving Emergency Mapping by e.g.
 - ✓ Using imagery derived from new sensors
 - ✓ Combining different imagery types, e.g. UAV data
 - ✓ Generation of augmented/virtual reality products
 - ✓ Incorporation and fusion of other data, e.g. coming from social media





Thank you for your attention!

German Aerospace Center (DLR)

Earth Observation Center | German Remote Sensing Data Center | Geo-Risks and Civil Security

Konstanze Lechner

konstanze.lechner@dlr.de



zki.dlr.de

